

Copley Township Fire Department

Policy Manual

An addendum to the Copley Township Personnel Policy Manual

Updated January, 2010

FD Policy Committee:

Michael Benson, Chief

James Rogers, Assistant Chief

Keith Moore, Captain

Karen Becker, Captain

Chuck Hrubik, Lieutenant

Bruce Koellner, Lieutenant

James Carter, Lieutenant

Copley Township Fire Department Policy Manual

Addendum to the Copley Township Policy Manual

Table of Contents

| Page | Section | Description | Revision Date |
|-------------|----------------|--|----------------------|
| 1 | FD101 | Policy Manual Statement | Feb 2008 |
| 2 | FD102 | Department Organization | Jan 2010 |
| 3 | FD103 | Mission Statement | Feb 2008 |
| 4 | FD150 | NIMS – Incident Management System | Feb 2009 |
| 5 | FD200 | Health and Safety Policy | Feb 2008 |
| 6 | FD225 | Roadway Safety | Feb 2009 |
| 7 | FD250 | Live Fire Policy | Jun 2008 |
| 8 | FD300 | Unit Response Policy | Jan 2010 |
| 9 | FD300.A | Unit Response Matrix | Jan 2010 |
| 10 | FD301 | On-Duty Response Level Policy | Feb 2008 |
| 11 | FD301.A | On-Duty Response Level Matrix | Jan 2010 |
| 12 | FD302 | Off-Duty Response Policy | Jan 2010 |
| 13 | FD303 | Apparatus Staffing Policy | Jan 2010 |
| 14 | FD304 | Fire Automatic Aid-RIC Response Policy | Jan 2010 |
| 15 | FD305 | Personnel Response Policy | Jan 2010 |
| 16 | FD310 | Communications Equipment | Sep 2008 |
| 17 | FD311 | Radio Communications | Sep 2008 |
| 19 | FD312 | Dispatch by Type of Call | Jan 2010 |
| 20 | FD710 | Uniform Policy | Jan 2010 |

Fire Department Policy Manual Statement

FD101

Effective: 1/31/2008

PURPOSE:

- This manual establishes standard fire department-specific policies not covered in the Copley Township Personnel Policy Manual (CTPPM).
- This addendum is meant to provide guidance when dealing with fire department-specific issues and situations, and to ensure department activities are consistent, effective, efficient and safe.

SCOPE:

This manual applies to fire department employees only.

POLICY:

- The Copley Fire Department shall provide for the safety, health and wellness of department members by establishing a fire department-specific policy manual and accompanying procedures.
- All fire department employees shall follow these policies and accompanying procedures to the best of their ability.

RESPONSIBILITY:

- All members will understand and follow these policies and procedures. Deviation from these policies and procedures is permitted due to unforeseen circumstances.
- Officers of the department are responsible to ensure their subordinates understand and follow these policies and procedures. Officers will document and report deviations to the Fire Chief, or his/her designee, for review.

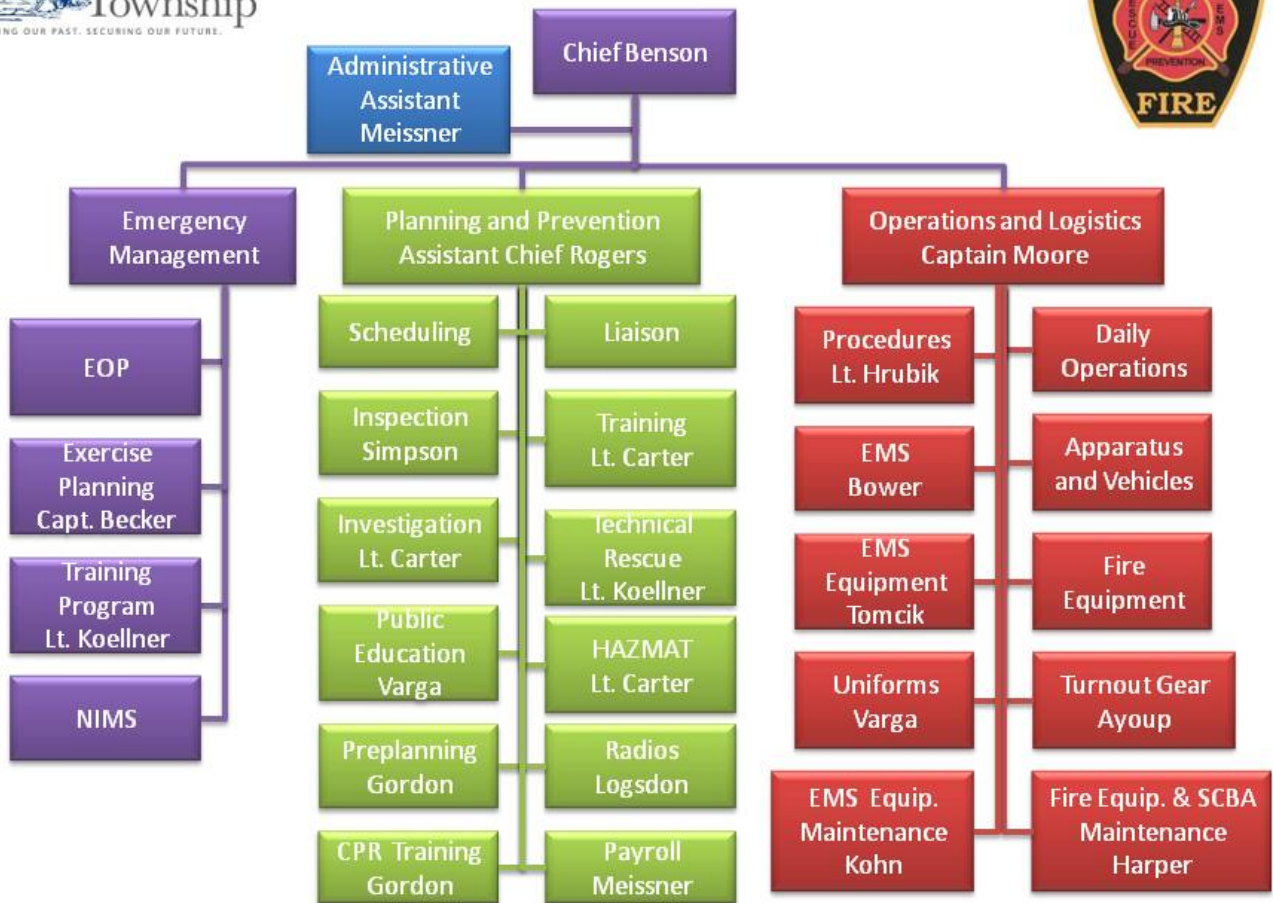
Fire Department Organization

FD102

Effective: 01/1/2010



Copley Fire Department Organizational Chart January 1, 2010



Fire Department Mission Statement

FD103

Effective: 11/26/2007

PURPOSE:

This policy defines the Fire Department's mission.

SCOPE:

This mission applies to fire department employees only. The Township mission applies to fire department and all other employees of the Township.

POLICY:

The Copley Fire Department will work together to provide superior service to the citizens and businesses of Copley Township through comprehensive risk management and safe, efficient and effective response.

RESPONSIBILITY:

It is the responsibility of the Fire Chief to emphasize following the mission every day in every activity the department undertakes.

Each member is responsible to use the mission as a guide in their activities.

Copley Fire Department Incident Management System

FD150

Effective: 2/29/2009

PURPOSE:

This policy establishes the National Incident Management System (NIMS), through the Summit County (Ohio) Fire Chiefs Incident Command System (SCFCICS), as the official Incident Management System (IMS) for the Copley Fire Department.

This policy is intended to meet the National Fire Protection Association Standard 1561, Emergency Services Incident Management System and NIMS.

SCOPE:

This policy applies to fire department employees only.

This policy applies to all fire department activities, including: emergency incidents, non-emergency incidents, special events, drills, exercises and any other hazardous or potentially hazardous situation.

POLICY:

The Copley Fire Department will follow the SCFCICS, a NIMS compliant incident management system.

RESPONSIBILITY:

Each incident commander, planner or leader is responsible to implement and follow our designated IMS.

REFERENCE:

Summit County Fire Chiefs Incident Command System, June 2006

Fire Department Health and Safety Policy

FD200

Effective: 2/1/2008

PURPOSE:

It is the intent of this policy to provide for the safety, health and welfare of all personnel.

SCOPE:

The Occupational Safety & Health Program (OSHP) governs all activities, emergency and non-emergency, of all personnel of this department and any other persons involved in fire department operations.

POLICY:

- This policy establishes an OSHP for the Copley Fire Department.
- Through the implementation of the OSHP, our goal is to reduce the frequency and severity of accidents, injuries, occupational illnesses and occupational exposures.
- The OSHP will be continuous and revised at least annually.

RESPONSIBILITY:

- Each employee is responsible to integrate the OSHP into their activities.
- The Fire Department Safety Officer is responsible to implement and ensure the program is followed, appropriate and up-to-date.

FD200

-Reference Ohio Administrative Code 4123 Specific Safety Regulations for Firefighting, NFPA 1500 and OSHA 1910.120

Fire Department Roadway Safety Policy

FD225

Effective: 2/1/2009

PURPOSE:

This policy establishes safe practices for fire department members when they are asked to operate on or near a roadway; in order to ensure their safe return to service at the end of their shift or at the end of an incident, because Everyone Goes Home!

This policy is intended to meet the requirements of 23CFR Part 634.3, Worker Visibility.

SCOPE:

This policy defines the actions of fire department members to provide for their safety when working on or near a roadway.

POLICY:

Members will position apparatus in a manner which best protects the work area from hazards while operating in a roadway.

Members will wear provided safety vests meeting ANSI/ISEA 107-2004 Class 2 or Class 3 standards whenever operating in a roadway, or when their activity places them on or near a roadway.

Members may choose not to wear a vest when we are exposed to hazardous conditions where the use of such apparel may increase the risk of injury to our personnel, such as: flame, fire, high heat or hazardous materials.

RESPONSIBILITY:

All members will comply with this policy.

The OIC or Incident Commander will enforce this policy.

Fire Department Live Fire Training Policy

FD250

Effective: 6/16/2008

PURPOSE:

This policy provides for the safety of our personnel when they are engaged in training with live fire.

SCOPE:

This policy applies to all fire department employees only.

POLICY:

The Copley Fire Department shall follow the standard for live fire training as described in the current National Fire Protection Association (NFPA) 1403 Standard on Live Fire Training Evolutions.

RESPONSIBILITY:

The Fire Chief and Training Officer will be responsible to ensure all live fire training is conducted safely and as described in NFPA 1403.

Fire Department Unit Response Policy

FD300

Effective: 1/1/2010

PURPOSE:

It is the intent of this policy to provide for consistent and appropriate responses to requests for service.

SCOPE:

All members who respond to requests for service are affected by this policy.

POLICY:

- Response to requests for service will be based on safety, effectiveness and efficiency.
- Responses will begin with the unit needed to provide the service requested, for example, fire apparatus respond to fires first and EMS units respond to EMS calls first.
- The chart below lists the unit number of the vehicles to respond to requests for service based on the request type and response area. A vehicle-type response matrix is also included on the next page.

RESPONSIBILITY:

- Each employee is responsible to follow this policy.
- The OIC is responsible to ensure the appropriate units are responding to an incident.

| Type of Call | Station 1 | Station 2 | Comments |
|---|--|--|--|
| EMS | 1511 or 1512, 1546 | 1221 or 1522, 1526 or 1546 | Other units as needed |
| Injury from Accident | 1511 or 1512, 1513 | 1221 or 1522, 1513, 1511 or 1512 if needed | 1546 in place of 1513 if scene is already safe |
| Serious Accident | 1511 and/or 1512, 1513, 1516 | 1221 or 1522, 1513, 1511 or 1512, 1516 | 2 Ambulances if manpower is available |
| Mutual Aid EMS | Ambulance or Manpower as Requested | Ambulance or Manpower as Requested | Only one unit, and only if available |
| Rescue | 1516, 1519, 1221 | 1221, 1516, 1519 | Other units as needed |
| Water Shuttle | 1518 | 1518 | |
| Vehicle Fire | 1513, 1511 or 1514 if needed | 1523, 1511 or 1514 if needed | Ensure vehicle is not near/in a structure |
| Vegetation Fire | 1517, 1513 | 1523, 1517 | Other units as needed |
| Miscellaneous Fire | 1513 | 1523 | Other units as needed |
| Structure Fire No Hydrants | 1513, 1523, 1518, 1519, 1511 or 1512, 1516 | 1523, 1513, 1518, 1519, 1511 or 1512, 1516 | Other units as needed |
| Structure Fire With Hydrants | 1513, 1523, 1519, 1511 or 1512, 1516 | 1523, 1513, 1519, 1511 or 1512, 1516 | Other units as needed |
| Alarm Drop No Hydrants | 1513, 1518, 1523 | 1523, 1513, 1518, 1519 | Other units as needed |
| Alarm Drop With Hydrants | 1513, 1519, 1523 | 1523, 1513, 1519 | Other units as needed |
| Mutual Aid Fire | Apparatus and manpower as requested | Apparatus and manpower as requested | Only one unit, and only if available |
| HAZMAT | 1513, 1516, 1221 | 1523, 1516, 1511 or 1512 | Other units as needed |
| Special | OIC will Determine | OIC will Determine | |

Fire Department Unit Response Matrix

FD300.A

Effective: 1/1/2010

| Type of Call | Station 1 | Station 2 | Comments |
|--|---|---|--|
| EMS | 1 st Ambulance 2 nd SUV | 1 st Stony Ambulance 2 nd SUV | Other units as needed |
| Injury from Accident | 1 st Ambulance 2 nd Pumper w/(Extrication Tools) | 1 st Stony Ambulance 2 nd Pumper w/(Extrication Tools) 3 rd Ambulance as needed | SUV in place of Pumper if scene is already safe |
| Serious Accident | 1 st Ambulance 2 nd Pumper w/(Extrication Tools) 3 rd Rescue | 1 st Stony Ambulance 2 nd Pumper w/(Extrication Tools) 3 rd Ambulance 4 th Rescue | 2 Ambulances if manpower is available |
| Mutual Aid EMS | Ambulance or Manpower as requested | Ambulance or Manpower as requested | Only one unit, and only if available |
| Rescue | 1 st Rescue 2 nd Ladder 3 rd Ambulance | 1 st Stony Ambulance 2 nd Rescue 3 rd Ladder | Other units as needed |
| Water Shuttle | Tender | Tender | |
| Vehicle Fire | 1 st Pumper 2 nd Pumper or Ambulance per OIC | 1 st Stony Pumper 2 nd Pumper or Ambulance per OIC | Ensure vehicle is not near/in a structure |
| Grass Fire | 1 st Grass Truck 2 nd Pumper | 1 st Stony Pumper 2 nd Grass Truck | |
| Miscellaneous Fire | Pumper | Stony Pumper | Other units as needed |
| Structure Fire No Hydrants | 1 st Pumper 2 nd Stony Pumper 3 rd Tender 4 th Ladder 5 th Ambulance 6 th Rescue | 1 st Stony Pumper 2 nd Pumper 3 rd Tender 4 th Ladder 5 th Ambulance 6 th Rescue | Other units as needed |
| Structure Fire With Hydrants | 1 st Pumper 2 nd Stony Pumper 3 rd Ladder 4 th Ambulance 5 th Rescue | 1 st Stony Pumper 2 nd Pumper 3 rd Ladder 4 th Ambulance 5 th Rescue | Other units as needed |
| Alarm Drop *No Other 911* No Hydrants | 1 st Pumper 2 nd Tender 3 rd Stony Pumper | 1 st Stony Pumper 2 nd Pumper 3 rd Tender 4 th Ladder 5 th Rescue | Other units as needed |
| Alarm Drop *No Other 911* With Hydrants | 1 st Pumper 2 nd Ladder 3 rd Pumper | 1 st Pumper 2 nd Ladder 3 rd Pumper | Other units as needed |
| HAZMAT | 1 st Pumper 2 nd Rescue 3 rd Stony Ambulance | 1 st Stony Pumper 2 nd Rescue 3 rd Ambulance | Other units as needed |
| Special | OIC will Determine | OIC will Determine | |

On-Duty Response Level Policy

FD301

Effective: 2/1/2008

PURPOSE:

It is the intent of this policy to provide for the safety, health and welfare of on-duty personnel while responding to incidents.

SCOPE:

All members responding while on-duty are affected by this policy.

POLICY:

This policy includes a matrix defining Emergency and Non-Emergency responses for on-duty personnel and apparatus. The matrix defines the type of calls requiring emergent and non-emergent responses. It is not an all-encompassing list; therefore, the Officer in Charge (OIC) will determine the response level for incidents not listed in the matrix. There are three possible levels of response:

- **Emergency** – all units respond with lights and sirens
- **Tiered** – the first-due apparatus responds emergency, all others respond non-emergency
- **Non-Emergency** – all responding units follow traffic rules and regulations

The OIC may upgrade or downgrade the response based on subsequent information after the initial dispatch of the request for service.

After arrival and while providing a size-up report, on-scene personnel shall advise responding units to upgrade or downgrade their responses as appropriate.

RESPONSIBILITY:

- Each employee is responsible to follow the laws for operating emergency vehicles listed in Chapter 4511 of the Ohio Revised Code.
- The OIC is responsible to enforce the level of response of all on-duty units.

Copley Fire Department Response Level Matrix

| Type of Call | Emergency | Tiered | Non-Emergency |
|-----------------------------------|----------------------------|----------------|----------------------------|
| EMS | | X | |
| Injury from Accident | | X | |
| Serious Accident | X | | |
| Mutual Aid EMS | As Requested by Mutual Aid | | As Requested by Mutual Aid |
| Rescue | OIC Determines | OIC Determines | OIC Determines |
| Water Shuttle | As Requested by Mutual Aid | | As Requested by Mutual Aid |
| Vehicle Fire | | X | |
| Vegetation Fire | | X | |
| Miscellaneous Fire | | X | |
| Residential Structure Fire | X | | |
| Commercial Structure Fire | X | | |
| Residential Alarm Drop | | X | |
| Commercial Alarm Drop | | X | |
| Mutual Aid Fire | As Requested by Mutual Aid | | As Requested by Mutual Aid |
| HAZMAT | OIC Determines | OIC Determines | OIC Determines |
| Special | OIC Determines | OIC Determines | OIC Determines |

Off-Duty Response Policy

FD302

Effective: 1/1/2010

PURPOSE:

It is the intent of this policy to provide for the safety, health and welfare of off-duty personnel while responding to incidents.

SCOPE:

All members responding to the fire station while off-duty are affected by this policy.

POLICY:

All personnel responding from home, or otherwise off-duty, will respond non-emergency and with the flow of traffic.

All personnel will respond to the fire station unless **ALL** of the following apply:

1. You are forced to pass the scene on your way to the station
2. You have appropriate personal protective equipment (turnout gear, pocket mask, etc.) with you
3. You are able to position your vehicle clear of the incident scene
4. The scene is safe for you to enter prior to on-duty units arriving
5. Your response will have an immediate impact on the incident while not putting you at risk

The Officer in Charge may not upgrade off-duty personnel responses from non-emergency status.

No members may use lights and sirens on their private vehicle.

Upon arrival at the Station, personnel will contact the IC for assignment.

RESPONSIBILITY:

- Each employee is responsible to follow this policy and the laws for vehicle operation in Chapter 4511 of the Ohio Revised Code.

Fire Department Apparatus Staffing Policy

FD303

Effective: 1/1/2010

PURPOSE:

It is the intent of this policy to provide for consistent and appropriate personnel levels of personnel on responding apparatus.

SCOPE:

All members who respond to requests for service are affected by this policy.

POLICY:

This matrix lists the expected number of Fire or EMS personnel needed to safely respond with each apparatus.

| Unit | Minimum | Preferred | Comments |
|---|------------------|-------------------|-----------------|
| Ambulance 1511, 1512, 1221, 1522 | 2 EMTs (1 Medic) | 3 EMTs (2 Medics) | |
| Pumper 1513, 1514 | 2 | 4 (Officer, 3 FF) | |
| Rescue 1516 | 2 | 4 (Officer, 3 FF) | |
| Brush Truck 1517 | 2 | 2 | |
| Water Tender 1518 | 2 | 2 | |
| Ladder (Aerial Truck) 1519 | 2 | 4 (Officer, 3 FF) | |
| Staff vehicle - SUV 1500, 1501, 1526, 1546, 1556 | 1 | 2 | |
| Utility Truck 1536 | 2 | 2 | |

The Officer in Charge may adjust this level as needed based on personnel availability and the incident priorities.

Except for staff vehicles, one person may respond in an emergency mode only in an extreme situation after the OIC has asked them to respond.

Requests by an OIC to have a single person respond a vehicle in emergency mode shall be explained in writing (paper or email) to the Chief as soon as possible after the incident.

RESPONSIBILITY:

- Each employee is responsible to follow this policy.
- The OIC is responsible to ensure the appropriate number of personnel is responding to an incident on our apparatus.

FD303

-Reference NFPA 1710/1720 and Ohio Revised Code Chapter 4765

Fire Department Auto Response Policy

FD304

Effective: 1/1/2010

PURPOSE:

It is the intent of this policy to provide for safe and effective levels of personnel and equipment for fire responses, including a Rapid Intervention Crew (RIC).

SCOPE:

This policy applies to all Copley Firefighters responding to automatic aid responses to and from the cities of Fairlawn and Norton and Sharon Township.

POLICY:

For fires in structures, including smoke in a building, Copley, Norton, Fairlawn and Sharon fire departments will automatically respond based on the following:

Fires in Copley

(The Officer in Charge (OIC) shall increase or reduce this automatic response based on an incident size-up.)

North of Copley Road
Residential – Fairlawn will send an Engine Company
Commercial – Fairlawn will send a Ladder Company
Norton will send a RIC
Sharon will send a Pumper-Tender

South of Copley Road
Norton will send an Engine Company
Fairlawn will send a RIC
Sharon will send a Pumper-Tender

Fires in Fairlawn – South of SR18 (West Market Street)
Copley will send an Engine Company (1513 or 1523 depending on location)

Fires in Norton – North of Greenwich Road
Copley will respond an Engine Company (1513)

Fires in Sharon
Copley will send a Tender unless a different unit is requested

RESPONSIBILITY:

- Each employee is responsible to follow this policy.
- The OIC is responsible to ensure the appropriate apparatus and numbers of personnel are responding on automatic aid responses.

Request Defined Personnel Response Policy

FD305

Effective: 1/1/2010

PURPOSE:

It is the intent of this policy to provide for consistent and appropriate responses to requests for service.

SCOPE:

All members who respond to requests for service are affected by this policy.

POLICY:

- Response to requests for service will be based on safety, effectiveness and efficiency.
- The chart below lists the response of on-duty, off-duty and on-call personnel.
- The OIC may increase or decrease the response based on available personnel, dispatch information and all other size-up factors.

RESPONSIBILITY:

- Each employee is responsible to follow this policy.
- The OIC is responsible to ensure the appropriate personnel are accounted for when arriving at the scene or station from a request for service.

| Type of Call | On-Duty | On-Call | Off-Duty |
|-----------------------------|---------------------------------|---|---------------------------------------|
| EMS | Initial Response | Up to two (2) personnel per operating period | All Call |
| Injury from Accident | Initial Response | Up to two (2) personnel per operating period | All Call |
| Serious Accident | Initial Response | All Personnel | All Personnel |
| Mutual Aid EMS | Response as Requested | | No response if on-duty is unavailable |
| Rescue | Initial Response | Up to two (2) personnel per operating period | All Call |
| Water Shuttle | Two (2) Personnel | | No response if on-duty is unavailable |
| Vehicle Fire | Initial Response | Up to two (2) personnel per operating period | All Call |
| Vegetation Fire | Initial Response | Up to two (2) personnel per operating period | All Call |
| Miscellaneous Fire | Initial Response | OIC will Determine | All Call |
| Structure Fire | Initial Response, Automatic Aid | All Personnel | All Personnel |
| Alarm Drop | Initial Response | Up to two (2) personnel per operating period to Station | All Call |
| Mutual Aid Fire | Response as Requested | | No response if on-duty is unavailable |
| HAZMAT | Initial Response | Up to two (2) personnel per operating period to Station | All Call |
| Special | OIC will Determine | OIC will Determine | All Call |

Fire Department Communications Equipment Policy

FD310

Effective: 9/15/2008

PURPOSE:

This policy establishes the requirements and uses for department communications systems.

SCOPE:

This policy applies to fire department employees only.

POLICY:

The department maintains three distinct communications systems: two-way radio, alphanumeric paging/text messaging and cellular phone/air card.

Each full-time member is assigned a two-way radio and will wear and use their portable radio while on duty.

Part-time employees have access to spare radios available at the station or in each vehicle; while on duty, they will wear and use a portable radio.

All members are assigned an alphanumeric pager or they may receive pages via text messaging on their personal cell phone. The employee is responsible to include text messaging as part of their phone plan; any costs associated with receiving text messages is the responsibility of the employee.

All employees while on-duty or on-call will wear their pager or cell phone and respond to pages or text messages from the department, dispatch or the Township, as defined in department response policies.

Cellular phones are assigned to the Chief, Assistant Chief, the Operations Captain and the OIC. Other phones are provided in the EMS units for contact with the hospital or other incident-related communications and a data phone allows for EKG transmission.

The OIC is required to wear and use the department phone while on duty.

Mobile Data Terminals (MDT) are in department vehicles for two-way communication with Dispatch and to provide a link to the Township's computer network for Firehouse Software, internet and preplan information.

MDTs are not intended for personal business and are limited to what is allowed in the Township Policy Manual.

RESPONSIBILITY:

It is the responsibility of the department's Assistant Chief (1501) and Operations Officer (1502) to provide personnel with their appropriate devices and training on their use.

Personnel will maintain their assigned equipment and use it appropriately, following Township policies and department procedures.

Radio voice and communications discipline is the responsibility of all members. What you broadcast on any wireless device is available for anyone to hear or use, be professional at all times.

Fire Department Radio Communications Policy

FD311

Effective: 9/15/2008

PURPOSE:

This policy establishes the approved use of two-way radio systems by fire department personnel.

SCOPE:

This policy applies to fire department employees only.

POLICY:

The communications model provided by the Summit County Fire Chiefs Incident Command System is the basis for our radio traffic and we will use plain language.

The Summit County MABAS numbering system will be used, ie: 1500, 1510, 1511, 1513, 1516, 1518, 1519.

The radio identifier for the dispatch center is "Dispatch".

The Officer in Charge is referred to as the "OIC". Until formal command has been established at an incident, the OIC is in command of daily operations.

Inappropriate or derogatory language is unacceptable. Over the air transmissions are heard by anyone who wants to listen, be courteous and respectful at all times.

RESPONSIBILITY:

All personnel using two-way radio communications are responsible for what they transmit across the airwaves.

The OIC or IC will enforce radio discipline.

REFERENCE:

Summit County Fire Chief's Incident Command System, June 2006

Dispatch by Type of Call Policy

FD312

Effective: 1/1/2010

PURPOSE:

It is the intent of this policy to provide for consistent and appropriate dispatches to requests for service.

SCOPE:

All dispatchers who dispatch requests for service are affected by this policy.

POLICY:

- Response to requests for service will be based on type, severity, and resource allocation and availability.
- The chart below lists the response of individual stations, multiple stations and off-duty personnel (All Calls).
- The OIC may increase or decrease the response based on available personnel, dispatch information and any other size-up factors.

RESPONSIBILITY:

- Each dispatcher is responsible to follow this policy.
- The OIC is responsible to ensure the appropriate personnel respond to a request for service.

| Type of Call | Single Station | Multiple Stations | All Call |
|--|---|---------------------------|--------------------|
| EMS | YES | By OIC Request | By OIC Request |
| Injury from Accident | Station 1 District | Station 2 District | By OIC Request |
| Serious Accident | NO | YES | YES |
| Mutual Aid – EMS | YES | By OIC Request | By OIC Request |
| Mutual Aid - Water Tender (Code 10) | YES | No | By OIC Request |
| Vehicle Fire | YES | By OIC Request | By OIC Request |
| Vegetation Fire | Station 1 District | Station 2 District | By OIC Request |
| Miscellaneous Fire | YES | By OIC Request | By OIC Request |
| Structure Fire | <u>Use The Auto Response Policy FD304 This is for fires in Copley only</u> | | YES |
| Alarm Drop | NO | YES | By OIC Request |
| Mutual Aid – Fire | YES | OIC will determine | OIC will determine |
| HAZMAT | OIC will Determine | OIC will Determine | OIC will Determine |
| Special | OIC will Determine | OIC will Determine | OIC will Determine |

Fire Department Uniform Policy

FD710

Effective: 1/1/2010

PURPOSE:

This policy establishes the uniform standard for Fire Department employees.

SCOPE:

This policy applies to fire department employees only.

POLICY:

At the end of this policy is a list of official uniform items for Fire Department employees, as described in the CBA for full-time employees. The wearing of these items is defined below:

On-Duty:

1. The standard uniform is:
 - Class-B Shirt – uniform T-shirt may be worn underneath
 - Uniform pants
 - Uniform belt
 - Uniform Socks (white is ok if wearing over-the-ankle boots)
 - Uniform shoes or boots
2. Weather related additions/replacements include:
 - Tactical Polo replaces Class-B shirt
 - Job Shirt (Class B or uniform T shirt is worn underneath)
 - Uniform Jacket
 - Uniform Gloves
 - Uniform ball cap or knit cap – Special/seasonal hats may be worn with permission of the Chief
3. Class-B Shirts are required all year round if your activity includes a public presentation, i.e. public education, inspections, attending community functions, etc.
4. T-Shirts and Crew-neck sweatshirts are intended for sleeping, maintenance, training, etc. They are not a substitute for the Class-B or Tactical Polo.
5. Deviation from this standard is acceptable if approved by the Operations Captain or a Chief Officer.
6. Gray exercise/sleep wear may be worn at night or during exercise. The gray items are being replaced. Do not consider them as part of your normal uniform.
7. Wearing the Class A uniform will be designated for specific events and activities. The IC for those events will set the uniform class to be worn.

Off-Duty:

1. Fire calls – The purpose is your safety because your gear is your appearance
 - Clothing fabric must be “substantially cotton” – NFPA standard
 - Blue Copley Fire T-shirt, Sweatshirt or Job shirt is preferred to non-uniform shirts
 - Jeans or primarily cotton pants are acceptable
2. EMS calls – The purpose is your safety and a professional appearance
 - Jumpsuit (clean coveralls), blue T-shirt, sweatshirt are all acceptable.
 - Clean pants/jeans and shoes/boots covering the whole foot are required.
 - The On-Duty uniform standard applies if you choose to wear the Class-B or Tactical Polo shirt.
 - Jumpsuit is preferred to street clothes; Polo or Class-B uniform is preferred to jumpsuit.

Fire Department Uniform Policy

FD710

Effective: 1/1/2010

3. Uniform items provided by the Township shall not be worn for personal use or the uniform item will be considered a taxable benefit.
4. Copley Fire-Rescue Association or IAFF Local 3130 wear is acceptable.
5. It is unacceptable to wear inflammatory, indecent, or otherwise inappropriate attire for a member representing the Copley Fire Department.

RESPONSIBILITY:

The OIC is responsible to enforce this policy.

All members are responsible to follow this policy.

UNIFORM ITEM LIST:

| Class A | Class B |
|----------------------------|--------------------------|
| Blouse-Jacket | Shirt - Short Sleeve |
| Dress Pant | Tactical Polo |
| Dress Shirt - Short Sleeve | CFD T-Shirt |
| Dress Shirt - Long Sleeve | Pants |
| Dress Belt | Shoes |
| Dress Socks | Belt |
| Dress Hat | Outer Wear |
| Dress Tie | New York Style Workshirt |
| Jacket Badge | Coat with Winter Liner |
| Name Plate | Winter Gloves |
| Hat Badge | Navy Watch Cap |
| Tie Clasp | Ball Cap |
| Exercise Wear | Nomex Coveralls |
| Shirt | |
| Shorts | |
| Sweatshirt | |
| Sweatpants | |