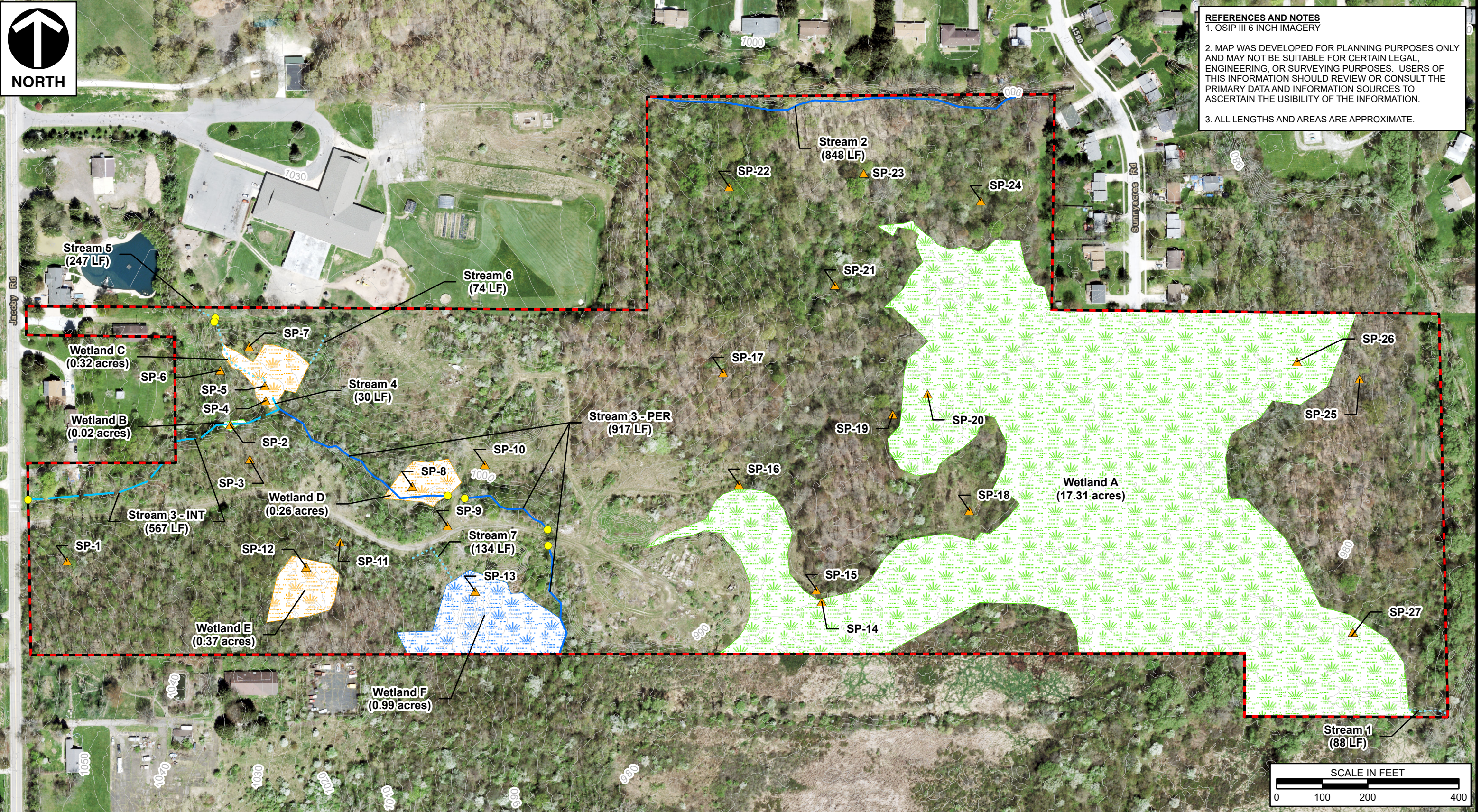




REFERENCES AND NOTES
1. OSIP III 6 INCH IMAGERY
2. MAP WAS DEVELOPED FOR PLANNING PURPOSES ONLY AND MAY NOT BE SUITABLE FOR CERTAIN LEGAL, ENGINEERING, OR SURVEYING PURPOSES. USERS OF THIS INFORMATION SHOULD REVIEW OR CONSULT THE PRIMARY DATA AND INFORMATION SOURCES TO ASCERTAIN THE USIBILITY OF THE INFORMATION.
3. ALL LENGTHS AND AREAS ARE APPROXIMATE.



| LEGEND | |
|--------|------------------------------------|
| | Approximate Site Boundary |
| | PEM Wetland |
| | PFO Wetland |
| | PSS Wetland |
| | Ephemeral Stream |
| | Intermittent Stream |
| | Perennial Stream |
| | 2' Contour |
| | Existing Culvert |
| | Wetland Determination Sample Point |



Civil & Environmental Consultants, Inc.
250 Old Wilson Bridge Road, Suite 250 - Worthington, OH 43085
614-540-6633 · 888-598-6808
www.cecinc.com

| | | | |
|-----------|-----------|-------------|---------|
| DRAWN BY: | MAK | CHECKED BY: | DRAFT |
| DATE: | 7/22/2021 | SCALE: | 1"=200' |

PRIDE ONE CONSTRUCTION
JACOBY ROAD
SUMMIT COUNTY, OHIO

**PRELIMINARY JURISDICTIONAL WATERS
DETERMINATION MAP**

| | | | |
|--------------|---------|------------|----------|
| APPROVED BY: | DRAFT* | FIGURE NO: | 3 |
| PROJECT NO: | 310-902 | | |

P:\310-000\310-902-GIS\Maps\Pro\JWD\310902_PJWD.aprx 7/22/2021 1:49 PM (mkramer)

*Hand Signature on file