

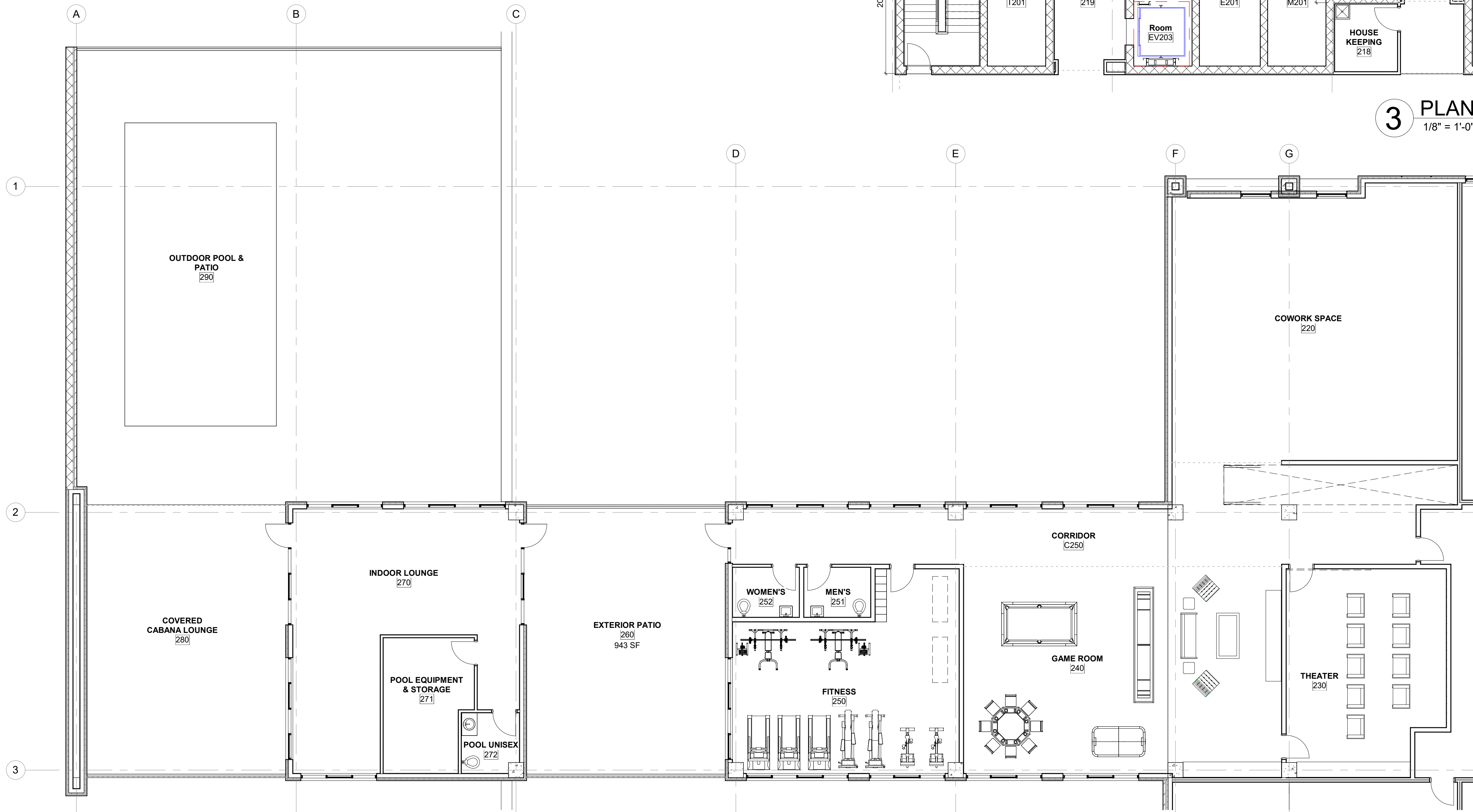
**3 PLAN LEVEL TWO - ENLARGED CORE**  
1/8" = 1'-0"

**GENERAL NOTES - FLOOR PLAN**

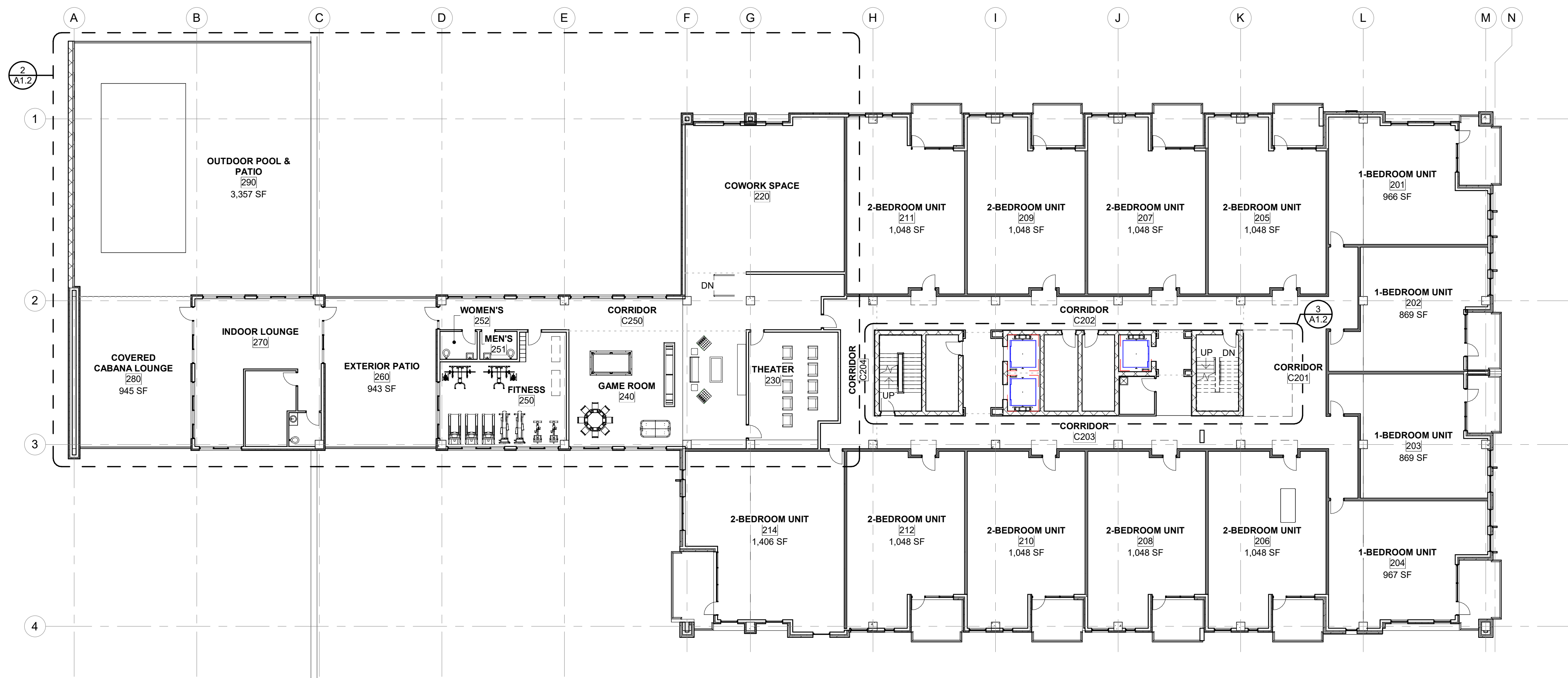
- ALL DIMENSIONS ARE TO FACE OF STUD AND/OR MASONRY (UNLESS NOTED OTHERWISE).
- VERIFY ALL DIMENSIONED CONDITIONS IN THE FIELD. WHEN DIMENSIONS AND/OR CONDITIONS AS INDICATED ON THE DRAWINGS CONFLICT WITH ACTUAL CONDITIONS, CONTACT THE ARCHITECT FOR CLARIFICATION.
- WALL THICKNESS INDICATED ON DRAWINGS SHALL BE CONSTANT FOR THE ENTIRE LENGTH OF THE WALL (U.N.O.).
- PROVIDE BEHIND WALL REINFORCING AND BLOCKING AS REQUIRED FOR DOOR STOPS, ATTACHMENT OF MILLWORK, CASEWORK, TOILET ACCESSORIES, ETC. WOOD BLOCKING MUST BE FRTW.
- ALL OUTSIDE GYPSUM CORNERS THROUGHOUT THE INTERIOR SPACE TO HAVE METAL CORNER BEADS.
- SAW-CUT OR TOOLED CONTROL JOINTS AT INTERIOR EXPOSED CONCRETE FLOORS SHALL BE CAULKED WITH SEALANT AS REQUIRED.
- REFER TO FINISH SCHEDULE FOR ADDITIONAL INFORMATION ON LOCATIONS AND TYPES OF FINISH MATERIALS.

**SYMBOL LEGEND**

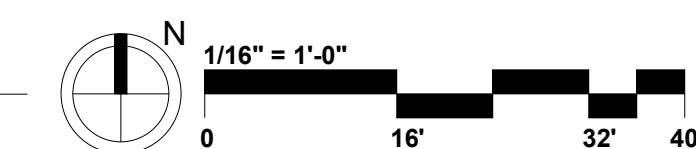
- ROOM NAME**  
101 INDICATES ROOM NAME AND NUMBER, REFER TO INTERIOR DESIGN DRAWINGS AND SPECIFICATIONS FOR ROOM FINISHES
- 308 INDICATES WALL CONSTRUCTION TYPE & HEIGHT, REFER TO G1.X SERIES SHEETS FOR DETAILED ASSEMBLY DESCRIPTIONS
- 102 TYPICAL SECTION AND DETAIL FLAGS:  
REFERS TO SECTION OR ELEVATION NUMBER  
REFERS TO DRAWING SHEET NUMBER
- 103 INDICATES DOOR TYPE - REFER TO A6.X SERIES SHEETS FOR DOOR SCHEDULE & DOORFRAME MATERIALS & ELEVATIONS, REFER TO SPECIFICATION SECTION 08 71 00 FOR DOOR HARDWARE INFORMATION
- 104 INDICATES WINDOW TYPE, REFER TO A6.X SERIES SHEETS FOR WINDOW ELEVATIONS
- 105 DATUM POINT, INDICATES ELEVATION



**2 PLAN LEVEL TWO - ENLARGED PUBLIC AMENITY**  
1/8" = 1'-0"



**1 PLAN LEVEL TWO**  
1/16" = 1'-0"



**PRELIMINARY**

**NOTE!!!**  
**THIS DRAWING IS NOT FOR CONSTRUCTION**

REVISIONS

**the ROCK**  
LUXURY LIVING

phone 330.666.5770  
fax 330.666.8812

**MPG**  
ARCHITECTS

MANN • PARSONS • GRAY  
3660 Embassy Parkway  
Fairlawn, OH 44333  
mpg-architects.com

**FLOOR PLAN(S) - LEVEL TWO**

PROJECT #: 16519  
DATE: JANUARY 28, 2022

**THE ROCK**  
506 ROTHROCK ROAD  
AKRON, OH 44321

**A1.2**  
Designer