

**REVISIONS**

**the ROCK**  
**LUXURY LIVING**

**MPG**  
**ARCHITECTS**

phone 330.666.5770  
fax 330.666.8812  
3660 Embassy Parkway  
Fairlawn, OH 44333  
mpg-architects.com

**TYPICAL END MIDDLE UNIT - (1) BEDROOM**  
PROJECT #: 16519  
DATE: JANUARY 28, 2022  
**THE ROCK**  
506 ROTHROCK ROAD  
AKRON, OH 44321

**A5.5**  
Designer

**FLAG NOTES - RCP**

- 1 CEILING OPEN TO STRUCTURE ABOVE, COORDINATE WITH BUILDING SECTIONS, WALL SECTIONS AND STRUCTURAL DRAWINGS.
- 2 HANG FIXTURE TIGHT TO STRUCTURE ABOVE. BOTTOM OF FIXTURE TO BE LEVEL. PROVIDE FRTW BLOCKING ABOVE AS NEEDED.
- 3 DUCTWORK FOR EXHAUST HOOD, COORDINATE WITH MECHANICAL DRAWINGS.
- 4 GYPSUM BOARD BULKHEAD, SEE DETAIL X/A8.1 FOR MORE INFORMATION.
- 5 GYPSUM BOARD SOFFIT, SEE DETAIL X/A8.1 FOR MORE INFORMATION.
- 6 WALL ABOVE STOREFRONT IS TO EXTEND TO THE DECK ABOVE.
- 7 NEW STOREFRONT GLAZING ABOVE, COORDINATE WITH SHEET A6.2.
- 8 START OF CEILING VAULT.
- 9 CEILING VAULT RIDGE.
- 10 PROVIDE GYP. SOFFIT AT CASEWORK BELOW.
- 11 ALIGN FEATURES.
- 12 HVAC DUCTWORK, SEE MECHANICAL DRAWINGS.
- 13 CEILING MOUNTED PROJECTOR SCREEN, SEE ELECTRICAL DRAWINGS.
- 14 CEILING MOUNTED PROJECTOR, COORDINATE POWER AND DATA REQUIREMENTS WITH ELECTRICAL DRAWINGS. LOCATION AND DISTANCE FROM SCREEN TO BE COORDINATED WITH MANUFACTURER.
- 15 SHADING INDICATES ROOMS TO RECEIVE SOUND INSULATION ABOVE CEILING. INSULATION SHALL EXTEND A MINIMUM OF 4'-0" BEYOND THE SOLID WALL PERIMETER OF EACH ROOM. ALL SOUND INSULATION IS TO BE ENCASED IN SEALED MEMBRANE. INSULATION NOT TO BE INSTALLED ON TOP OF LIGHTS OR DIFFUSERS.

**FLAG NOTES - ENLARGED PLANS**

- 1 FURNISHING TO BE PROVIDED BY OWNER.
- 2 STANDARD CLOSET SHELF.
- 3 ACCESSIBLE CLOSET SHELF.

**GENERAL NOTES - RCP**

1. FACE OF BULKHEADS SHALL ALIGN W. FACE OF ADJACENT WALLS TO WHICH BULKHEADS ARE PARALLEL, U.N.O. OR DIMENSIONED.
2. CEILING GRIDS ARE CENTERED ON ROOM, U.N.O. OR DIMENSIONED.
3. COORDINATE ARCHITECTURAL REFLECTED CEILING PLANS WITH THE MECHANICAL AND ELECTRICAL DRAWINGS FOR NUMBER OF, AND LOCATIONS OF, AND TYPES OF FIXTURES AND GRILLES. NOT ALL ITEMS SHOWN ON LEGEND MAY BE PRESENT IN PROJECT.
4. DOWNLIGHTS, DIFFUSERS, SPRINKLER HEADS, ETC. SHALL BE CENTERED IN CEILING PANELS IN BOTH DIRECTIONS, UNLESS NOTED OTHERWISE.
5. WHERE EXIT SIGNS AND REMOTE HEADS OCCUR OVER A DOOR OR PAIR OF DOORS, CENTER SIGN ON DOOR OPENING U.N.O.
6. PAINT DUCTWORK TO BLEND IN WITH CEILING WHERE EXPOSED. CEILING BEAMS AND DECKING TO BE STAINED, COORDINATE COLOR WITH OWNER.
7. PROVIDE UNI-STRUT(S) UNDER DUCTWORK FOR HANGING LIGHT FIXTURES.
8. COORDINATE HEIGHTS OF ALL HANGING PENDANTS AND WALL SCONCES WITH OWNER AT TIME OF INSTALLATION.

**GENERAL NOTES - FLOOR PLAN**

1. ALL DIMENSIONS ARE TO FACE OF STUD AND/OR MASONRY (UNLESS NOTED OTHERWISE).
2. VERIFY ALL DIMENSIONED CONDITIONS IN THE FIELD. WHEN DIMENSIONS AND/OR CONDITIONS AS INDICATED ON THE DRAWINGS CONFLICT WITH ACTUAL CONDITIONS, CONTACT THE ARCHITECT FOR CLARIFICATION.
3. WALL THICKNESS INDICATED ON DRAWINGS SHALL BE CONSTANT FOR THE ENTIRE LENGTH OF THE WALL (U.N.O.).
4. PROVIDE BEHIND WALL REINFORCING AND BLOCKING AS REQUIRED FOR DOOR STOPS, ATTACHMENT OF MILLWORK, CASEWORK, TOILET ACCESSORIES, ETC. WOOD BLOCKING MUST BE FRTW.
5. ALL OUTSIDE GYPSUM CORNERS THROUGHOUT THE INTERIOR SPACE TO HAVE METAL CORNER BEADS.
6. SAW-CUT OR TOOLED CONTROL JOINTS AT INTERIOR EXPOSED CONCRETE FLOORS SHALL BE CAULKED WITH SEALANT AS REQUIRED.
7. REFER TO FINISH SCHEDULE FOR ADDITIONAL INFORMATION ON LOCATIONS AND TYPES OF FINISH MATERIALS.

**GENERAL NOTES - WALL TYPES**

1. ALL DIMENSIONS TO FACE OF WALL U.N.O.
2. USE 1/2" CEMENT BOARD FOR ALL WALLS TO RECEIVE CERAMIC TILE, UNO. MATCH HEIGHT OF CEMENT BOARD WITH TILE.
3. FIRE SAFE ALL JOINTS AND PENETRATIONS AT FIRE RATED PARTITIONS.
4. UL NUMBERS LISTED APPLY ONLY TO THE TESTED MANUFACTURERS. EQUAL MANUFACTURERS' EQUIVALENT ASSEMBLY INFORMATION MUST BE APPROVED BY ARCHITECT.
5. SOUND ATTENUATION BATTS TO BE INSTALLED IN ALL INTERIOR PARTITIONS U.N.O. INSULATION MUST EXTEND FULL HEIGHT OF PARTITION. INSTALL ACOUSTIC SEALANT AT BOTH SIDES, ALONG THE TOP AND BOTTOM, AND AT INTERSECTING PARTITIONS AS REQUIRED BY STC RATING.
6. REFER TO FINISH SCHEDULE AND INTERIOR DESIGN DRAWINGS FOR FINISHES.
7. REFER TO STRUCTURAL DRAWINGS FOR REQUIRED STUD SPACING, GAUGE, AND BRACING.
8. REFER TO EXTERIOR ELEVATIONS SHEET AX.X FOR BASE MATERIAL HEIGHTS.

**CEILING LEGEND**

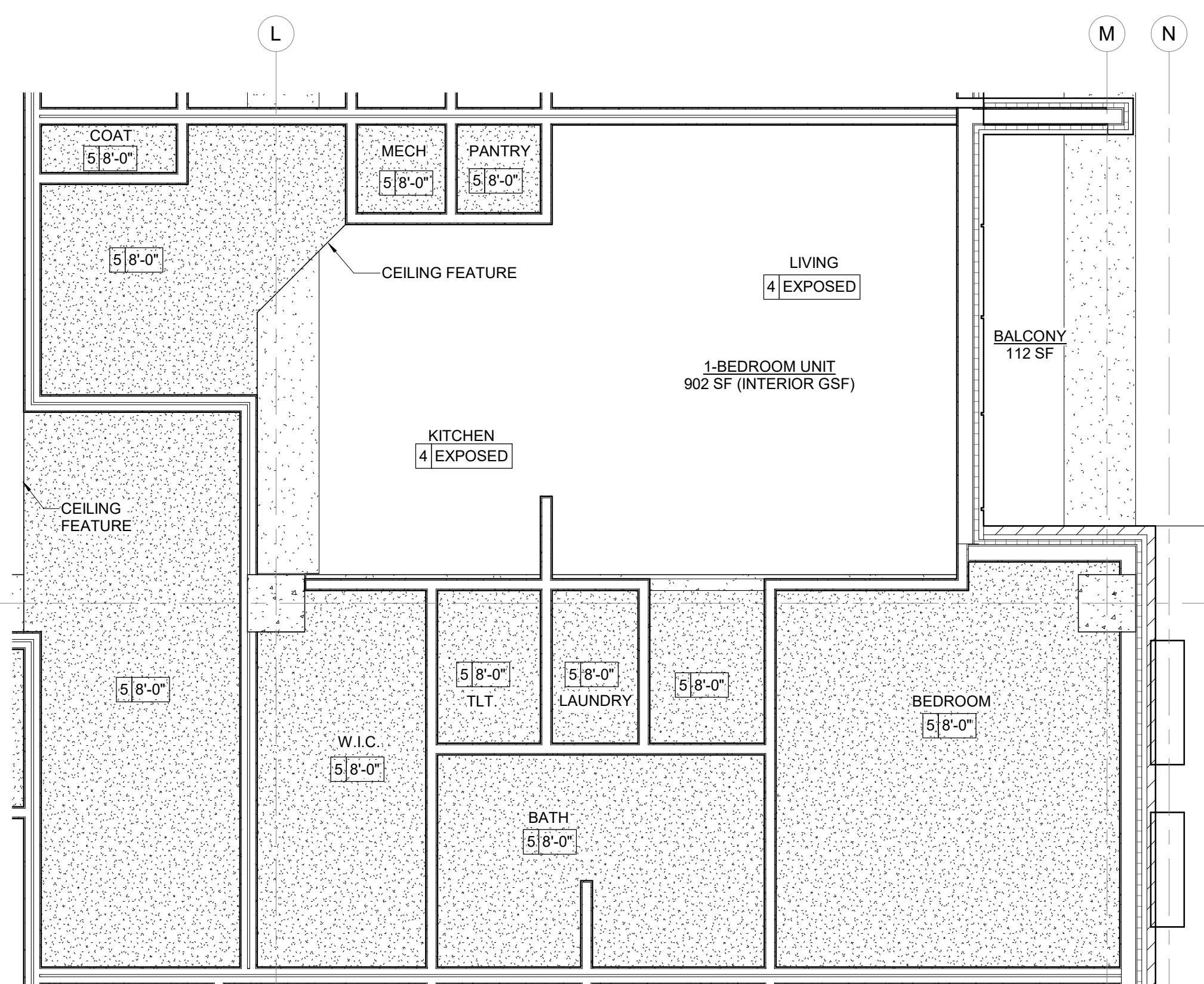
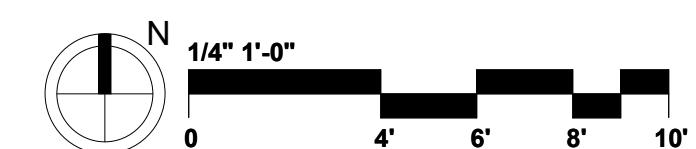
- 1 HEIGHT 2x2 LAY-IN ACOUSTICAL CEILING
- 2 HEIGHT 2x4 LAY-IN ACOUSTICAL CEILING
- 3 HEIGHT 2x4 "SECOND LOOK" LAY-IN ACOUSTICAL CEILING
- 4 HEIGHT EXPOSED CEILING
- 5 HEIGHT GYPSUM BOARD CEILING OR SOFFIT

**SYMBOL LEGEND**

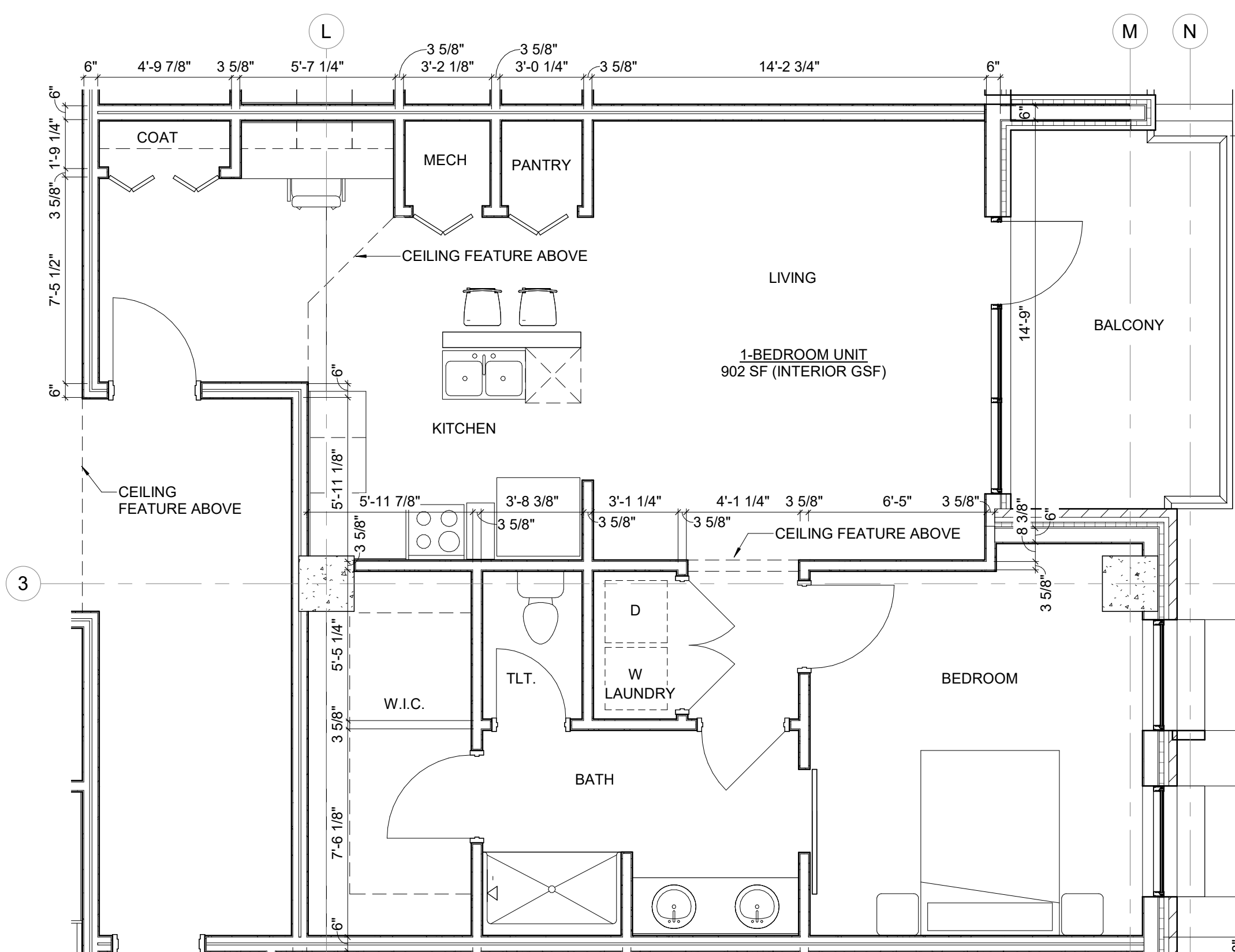
- ROOM NAME** INDICATES ROOM NAME AND NUMBER, REFER TO INTERIOR DESIGN DRAWINGS AND SPECIFICATIONS FOR ROOM FINISHES
- WALL** INDICATES WALL CONSTRUCTION TYPE & HEIGHT, REFER TO G1.X SERIES SHEETS FOR DETAILED ASSEMBLY DESCRIPTIONS
- SECTION** TYPICAL SECTION AND DETAIL FLAGS. REFERS TO SECTION OR ELEVATION NUMBER. REFERS TO DRAWING SHEET NUMBER.
- DOOR** INDICATES DOOR TYPE - REFER TO A6.X SERIES SHEETS FOR DOOR SCHEDULE & DOOR/FRAME MATERIALS & ELEVATIONS, REFER TO SPECIFICATION SECTION 08 71 00 FOR DOOR HARDWARE INFORMATION
- WINDOW** INDICATES WINDOW TYPE, REFER TO A6.X SERIES SHEETS FOR WINDOW ELEVATIONS
- DATUM POINT** INDICATES ELEVATION

**RCP LEGEND**

- 2x4 DIFFUSED TROFFER LIGHT
- 2x2 DIFFUSED TROFFER LIGHT
- 1x4 DIFFUSED TROFFER LIGHT
- 2x4 SURFACE MOUNTED BOX LIGHT
- 2x2 SURFACE MOUNTED BOX LIGHT
- 1x4 SURFACE MOUNTED BOX LIGHT
- 1x4 LINEAR PENDANT LIGHT
- 2x4 LINEAR PENDANT LIGHT
- RECESSED CAN LIGHT
- SINGLE LAMP WITH PULL CHAIN
- PENDANT LIGHT
- SCONCE LIGHT
- SURFACE MOUNTED LIGHT
- TRACK LIGHTING
- SHOP LIGHT
- HIGH BAY FIXTURE
- EMERGENCY LIGHT FIXTURE
- REMOTE EMERGENCY HEADS
- EXIT LIGHT
- EXIT LIGHT WITH EMERGENCY LIGHT HEADS
- EXTERIOR WALL PACK LIGHT
- EXTERIOR LIGHT POLE
- RETURN AIR GRILLE
- SUPPLY DIFFUSER
- EXHAUST GRILLE
- CEILING FAN



**2 PLAN** LEVEL 4 - TYPICAL SHORT SIDE INTERIOR UNIT - (1) BEDROOM RCP  
1/4" = 1'-0"



**1 PLAN** LEVEL 4 - TYPICAL SHORT SIDE INTERIOR UNIT - (1) BEDROOM  
1/4" = 1'-0"