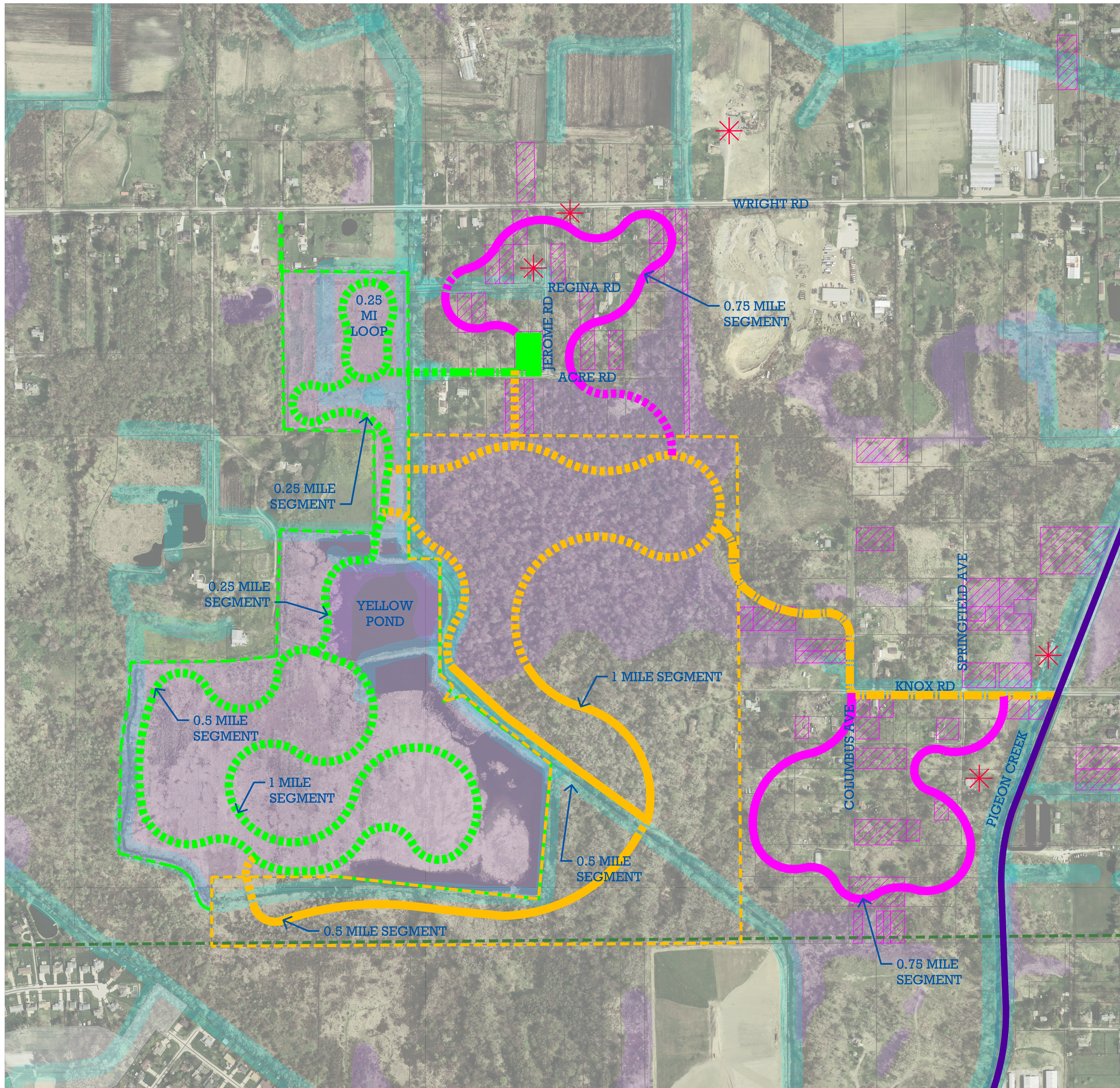
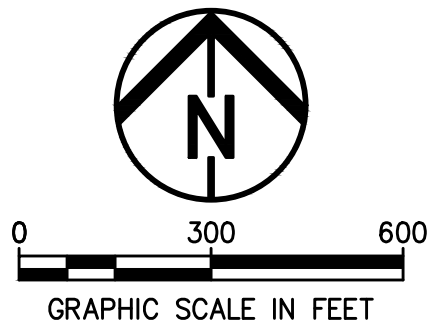


E:\SUMMIT COUNTY GENERAL HEALTH DISTRICT\16-00416-010 COMPLETE STREETS PLANNING\CAD\SETS\COPY1 PLAN - 9/20/2017 12:10:20 PM



- NOTES:
1. TOTAL TRAIL MILEAGE APPROXIMATELY 6.5 MILES.
  2. "SEGMENT" REFERS TO TRAIL BETWEEN INTERSECTIONS.

- LEGEND:
- PROPOSED TRAIL - BOARDWALK
  - PROPOSED TRAIL - AGGREGATE SURFACE
  - PROPOSED TRAIL - PAVED
  - THREE CREEKS TRAIL
  - UNIVERSITY OF AKRON WETLANDS TRAIL
  - BESSIE WILLIAMS SUPERFUND SITE TRAIL
  - COPLEY TOWNSHIP TRAIL
  - PLANNED DEMOLITION BY COPLEY TOWNSHIP
  - PARCEL PURCHASED BY COPLEY TOWNSHIP
  - BESSIE WILLIAMS SUPERFUND SITE BOUNDARY
  - UNIVERSITY OF AKRON WETLANDS BOUNDARY
  - LITTLE FARMS NEIGHBORHOOD BOUNDARY
  - DRIVEWAY/PARKING
  - RIPARIAN SETBACK
  - WETLAND



DRAFT

LITTLE FARMS TRAIL  
PLAN  
SUMMIT COUNTY PUBLIC HEALTH  
COPLEY TOWNSHIP

#####

DATE: \_\_\_\_\_

REVISIONS		
Δ	DATE	DESCRIPTION
####	####	####
####	####	####
####	####	####
####	####	####
####	####	####
####	####	####

PROJECT NO.: 16-00416-010  
DRAWN BY: RSW  
CHECKED BY: KJL  
DATE ISSUED: SEPT. 13, 2017

ACTIVE  
TRANSPORTATION  
ROUTE STUDY