

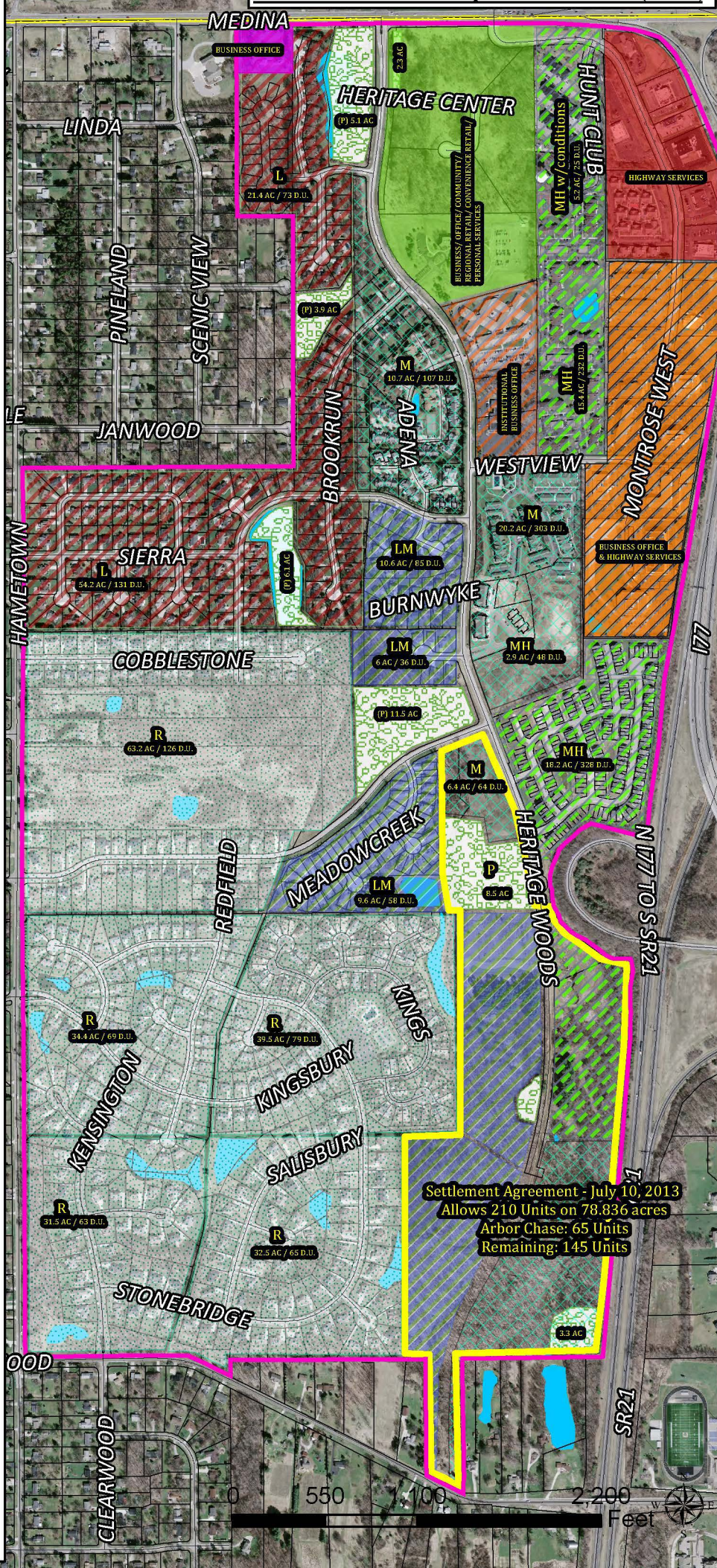
## PDD Residential Districts

-  Low Density (L)
-  Low/Medium Density (LM)
-  Medium Density (M)
-  Medium/High Density (MH)
-  Protected Areas (P)
-  Residential (R)
-  Settlement Development Area

## PDD Commercial Use Groups

-  Business Office
  - Broadcasting Stations
  - Laboratories
  - Medical Facilities
  - Veterinary Facilities
  - \*Conditional Uses - see [www.copley.oh.us](http://www.copley.oh.us)
-  Highway Services
  - Auto & Truck Sales/Service
  - Gasoline Service Stations
  - Motels & Hotels
  - Restaurants
-  Business Office & Highway Service
  - Broadcasting Stations
  - Laboratories
  - Medical Facilities
  - Veterinary Facilities
  - \*Conditional Uses - see [www.copley.oh.us](http://www.copley.oh.us)
  - Auto & Truck Sales/Service
  - Gasoline Service Stations
  - Motels & Hotels
  - Restaurants
-  Institutional
  - Governmental Facilities
  - Public & Private Educational Facilities
  - Residential Health Care Facilities
-  Office/Personal Service/Retail
  - Broadcasting Stations
  - Laboratories
  - Medical Facilities
  - Veterinary Facilities
  - \* Conditional Uses - see [www.copley.oh.us](http://www.copley.oh.us)
- Business Office**
  - Broadcasting Stations
  - Laboratories
  - Medical Facilities
  - Veterinary Facilities
  - \* Conditional Uses - see [www.copley.oh.us](http://www.copley.oh.us)
- Community & Regional Retail**
  - Auto & Vehicle Sales/Service
  - Amusement & Recreational Facilities
  - General Retail Sales
  - Grocery Store
  - Mortuary & Crematory
  - Wholesale Establishments
  - \* Conditional Uses - see [www.copley.oh.us](http://www.copley.oh.us)
- Convenience Retail & Personal Services**
  - Bakery/Deli
  - Banks & Savings Institutions
  - Barber & Beauty Shop
  - Dry Cleaning & Laundry
  - Drug Store
  - Florist & Gift Shop
  - Restaurant
  - Shoe Repair
  - Small Equipment Repair
  - Tailor & Dressmaker
  - \* Conditional Uses - see [www.copley.oh.us](http://www.copley.oh.us)

## The Planned Development District (PDD)



**Copley Strong**  
STRATEGIC LAND PLANNING  
*Department of Community & Economic Development*

Loudan Klein, Director  
Shawna Gfroerer, Planning & Zoning Inspector  
Jeffrey Newman, Code Enforcement Officer  
Clarissa Hunt, Administrative Assistant