



SUMMIT
SOIL & WATER
CONSERVATION DISTRICT

SWMD News

February 2024



ONLY RAIN DOWN THE DRAIN

How much is an inch of rain? An inch of rain is exactly that, water that is one inch deep. Per the USGS Rainfall Calculator, one inch of rainfall equals 6 gallons of water per square yard or 27,154 gallons per acre!

When it rains, stormwater runs off the land, collecting pollutants, such as soil, grass clippings, leaves, chemicals, auto fluids, and pet waste, then flows right into the nearest surface water and causes algae blooms.

Remember to keep your yard pollutant-free and keep sending "Only Rain Down the Drain!" because most storm drains empty right into streams, rivers or lakes.

Greetings!

February is in full swing, and spring is right around the corner!

Please contact me about hosting a Public Involvement meeting in your community. These meetings are required for our SWMD EPA permit. During the meeting, I will go over EPA requirements and talk about our yearly theme, "It's Not Hard to Have a Healthy Yard!"

Consider inviting us to one of your community events, or have us talk at community or local organization meetings. We have seed packets, coloring books, and more for giveaways.

Summit SWCD still have beautiful 2024 conservation themed calendars available. Let us know how we can get them to you!

A reminder that the SWMD Grant application is live on our website. **The application deadline has been extended to April 30, 2024!**

Please spread the word about this wonderful opportunity! More information can be found on our website: <https://sswcd.summitoh.net/node/84>

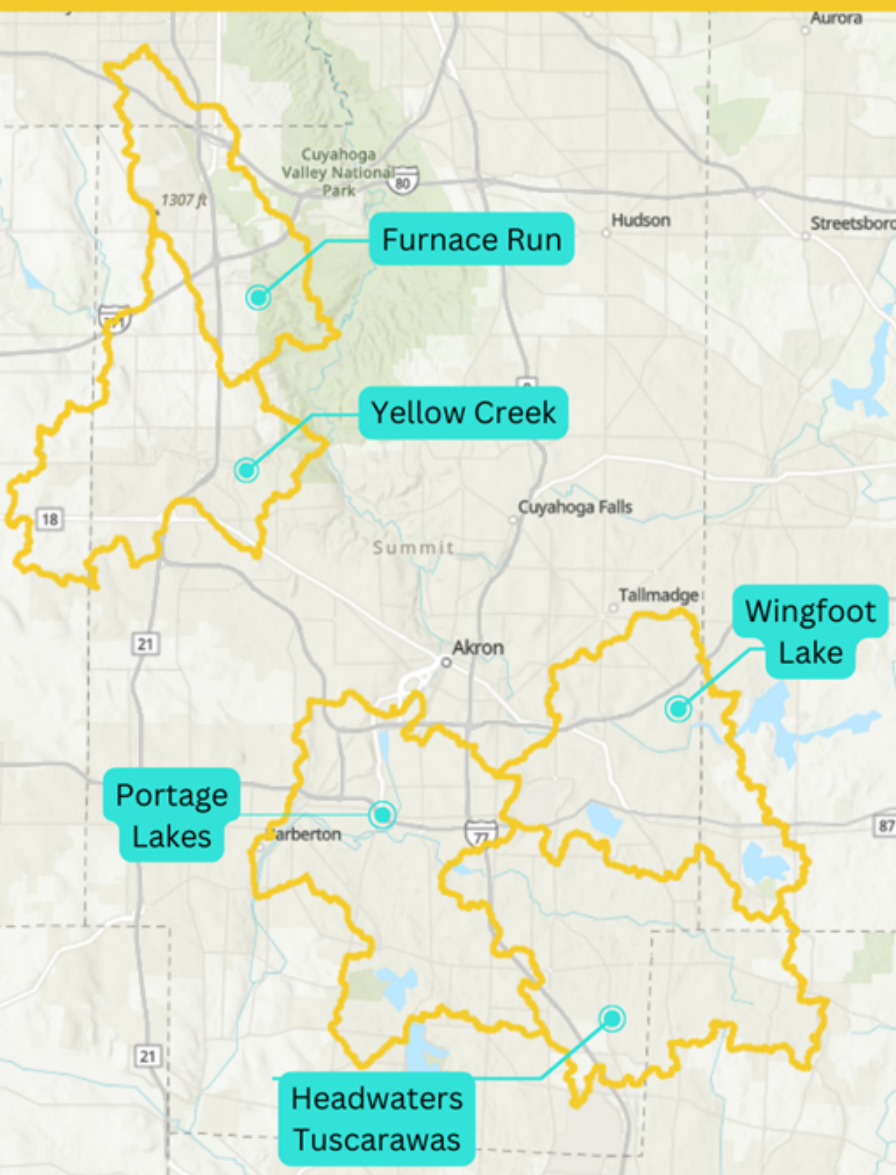
Natalie Schroder, Outreach Coordinator



Volunteer Opportunity

Get into Action and be a Volunteer Stream Scientist!

2024 Volunteer Monitoring Areas



We're seeking passionate volunteers who want to join our local stream monitoring team for the 2024 field season!

This year, our program includes both the Cuyahoga River Basin and the Tuscarawas River Basin, meaning more opportunities for you to make a meaningful impact in your community.

Our watershed coordinators will teach you all you need to know to measure the health of our local streams, so no prior experience needed!

All monitoring equipment is provided, and our coordinators are available to support your efforts throughout the season.

If you're interested in learning more about joining our volunteer program, [click here](#) to visit our webpage!